

# Validity of the classification of emergency service requests related to suicidal behavior

Javier Ramos-Martín,<sup>1</sup> Évelin Lourdes Rueda-Artero,<sup>1</sup> José del Campo-Ávila,<sup>2</sup> Ana I. Martínez-García,<sup>3,4</sup> Pilar Castillo-Jiménez,<sup>3</sup> Berta Moreno-Küstner<sup>1,4,5</sup>

<sup>1</sup> Departamento de Personalidad, Evaluación y Tratamiento Psicológico, Universidad de Málaga, España.

<sup>2</sup> Departamento de Lenguajes y Ciencias de la Computación, Universidad de Málaga, España.

<sup>3</sup> Unidad de Gestión Clínica del Dispositivo de Cuidados Críticos y Urgencias del Distrito Sanitario Málaga-Coin-Guadalhorce, Málaga, España.

<sup>4</sup> Grupo Andaluz de Investigación Psicosocial (GAP) (CTS-945).

<sup>5</sup> Instituto de Biomedicina de Málaga (IBIMA).

## Correspondence:

Javier Ramos Martín  
Departamento de Personalidad, Evaluación y Tratamiento Psicológico, Facultad de Psicología.  
Campus de Teatinos s/n,  
29071 Málaga.  
Phone: 695 509-442  
Email: [javierramos@uma.es](mailto:javierramos@uma.es)

Received: 17 January 2021

Accepted: 8 July 2021

## Citation:

Ramos-Martín, J., Rueda-Artero, E. L., del Campo-Ávila, J., Martínez-García, A. I., Castillo-Jiménez, P., & Moreno-Küstner, B. (2022). Validity of the classification of emergency service requests related to suicidal behavior. *Salud Mental*, 45(2), 53-59.

DOI: [10.17711/SM.0185-3325.2022.008](https://doi.org/10.17711/SM.0185-3325.2022.008)



## ABSTRACT

**Introduction.** Suicide attempts are the most predictive risk factor for suicide deaths. Most people who attempt suicide receive care from out-of-hospital Emergency Services (OES), where these requests are managed and classified. **Objective.** Validate the Emergency Coordination Center (ECC) classification for the detection of suicidal behavior requests. **Method.** A descriptive, cross-sectional study of requests to the ECC of Málaga (Spain) during 2013 and 2014 was conducted. To classify the requests, the authors considered the ECC categorization when answering the call and the clinical assessment of the healthcare professional when attending the person who had made the call at the scene, which was considered the reference standard. To analyze the validity of the ECC classification system, sensitivity, specificity, and positive and negative predictive values (PPV and NPV) were calculated. **Results.** The total number of requests for medical assistance analyzed was 112,599. The validity indicators of the classification system for suicidal behavior were sensitivity = 44.78%, specificity = 99.34%, PPV = 46.91% and NPV = 99.28%. **Discussion and conclusion.** The ECC classification system has a lower capacity to detect the presence of suicidal behavior and a higher capacity to identify its absence in the requests received. OES provide key information on suicidal behavior requests as they can be one of the first places people with this problem go to. It would therefore be extremely useful to improve the classification systems for requests related to suicidal behavior.

**Keywords:** Out-of-hospital Emergency Services, suicide, classification, validity.

## RESUMEN

**Introducción.** Los intentos de suicidio constituyen el factor de riesgo más predictivo de todos los casos de suicidio consumado. La mayoría de las personas que intentan suicidarse reciben atención en los Servicios de Urgencias Extrahospitalarios (SUE) donde se gestionan y clasifican estas demandas. **Objetivo.** Validar la clasificación del Centro Coordinador de Urgencias y Emergencias (CCUE) para detectar las demandas relacionadas con la conducta suicida. **Método.** Se llevó a cabo un estudio descriptivo y transversal de las demandas al CCUE de Málaga (España) realizadas durante 2013 y 2014. Para su clasificación se tuvo en cuenta la categorización en el CCUE al responder la llamada y el juicio clínico del profesional sanitario cuando atiende al demandante *in situ*, considerando éste como patrón de referencia. Para evaluar la validez del sistema de clasificación se calcularon la sensibilidad, la especificidad y los valores predictivos positivo (VPP) y negativo (VPN). **Resultados.** El total de demandas sanitarias analizadas fue de 112,599. Los indicadores de validez del sistema de clasificación para las demandas por conductas de suicidio fueron una sensibilidad = 44.78%, especificidad = 99.34%, VPP = 46.91% y VPN = 99.28%. **Discusión y conclusión.** El sistema de clasificación del CCUE presenta una capacidad más baja para detectar presencia de conducta suicida comparada con una capacidad más alta para identificar su ausencia en las demandas recibidas. Los SUE aportan información relevante sobre las demandas por conducta suicida ya que pueden ser uno de los primeros lugares a los que acuden las personas con este problema. Por ello, sería de gran utilidad mejorar los sistemas de clasificación de las demandas por conducta suicida.

**Palabras clave:** Servicio de Urgencias extrahospitalario, suicidio, clasificación, validez.

## INTRODUCTION

Suicide is a public health problem, causing over 800,000 deaths worldwide every year (World Health Organization [WHO], 2019). In Spain, a total of 3,539 suicide deaths were registered in 2018, equivalent to a suicide rate of 7.9 per 100,000 inhabitants (Instituto Nacional de Estadística [INE], 2019). However, these figures only consider actual suicide deaths and do not include suicide attempts. It is estimated that for every suicide death, there are 20 previous attempts (WHO, 2014), which are the most predictive risk factor for suicidal behavior (Parra-Urbe et al., 2017).

Since most people who attempt suicide go to out-of-hospital Emergency Services (OES), it is essential to study the classification and correct registration of suicide attempts in the latter. However, scientific literature, although scant, has focused on studying the validity of triage systems that determine the level of priority of Hospital Emergency Service (HES) requests (Feldman et al., 2006; Groscurin et al., 2019; Parenti, Bacchi Reggiani, Iannone, Percudani, & Dowding, 2014; Williamson, Gochman, Bullaro, Kaufman, & Krief, 2018). Although their use can be extrapolated to OES (Gräff et al., 2014), there has been less research in this respect, especially as regards mental problems (Shah et al., 2009) and particularly suicide.

In Andalusia, the largest autonomous community in Spain, various research projects have focused on the analysis of requests related to suicidal behavior (Blanco-Sánchez et al., 2018; Mejías-Martín et al., 2018; 2019) and observed that the highest rate occurs in the province of Málaga. Studies conducted in this province have found differential characteristics in requests related to suicidal behavior with respect to other OES requests (Guzmán-Parra et al., 2016; Jiménez-Hernández et al., 2017; Moreno-Küstner et al., 2019). However, results obtained in previous studies reveal differences in the classification of suicide attempts (Blanco-Sánchez et al., 2018; Guzmán-Parra et al., 2016; Jiménez-Hernández et al., 2017; Mejías-Martín et al., 2018; 2019; Moreno-Küstner et al., 2019). Some studies classify a request as involving suicidal behavior when the operator answering the call and the doctor attending the patient consider it as such (Mejías-Martín et al., 2018; 2019; Moreno-Küstner et al., 2019). However, others have regarded requests related to suicidal behavior by using merely the classification made by the operator (Guzmán-Parra et al., 2016; Jiménez-Hernández et al., 2017). Furthermore, Blanco-Sánchez et al. (2018) observed enormous difficulty on the part of health professionals in classifying suicide attempts due to the implications this entails, since it is one of the behaviors with the lowest registration rate in health reports (Miret et al., 2010).

These circumstances justify the need for a valid classification system of OES requests. For this reason, and due to the importance of having a useful classification to im-

prove care provision, the general objective of this study is to validate the classification of the Emergency Coordinating Center (ECC) of Málaga (Spain), based on its sensitivity, specificity, and positive (PPV) and negative (NPV) predictive values for the detection of requests related to suicidal behavior.

## METHOD

### The mechanics of the ECC

To meet out-of-hospital demands, Andalusia has a network managed through the Public Health Emergency Corporation (PHEC). The various programs are coordinated by the Emergency Coordinating Centers (ECC) located in each of the Andalusian provinces, all of whom classification systems are similar. Requests are registered on the basis of the information received by telephone. The telephone operator asks a series of questions according to a protocol established for each type of request, supervised by the coordinating doctor, to choose the best resource according to the reason for the call (Servicio Andaluz de Salud, 2018). Proper care for these users requires assigning a priority level based on a triage system according to severity: emergency, urgent emergency, non-urgent emergency, and household notifications (Guzmán-Parra et al., 2016).

Requests are classified at two separate times. The first corresponds to the ECC categorization made by the telephone operator at the time of answering the call, based on the following 14 categories: “Traffic accidents,” “Alteration of vital signs,” “Neurological disorders and/or alterations of level of consciousness,” “Dyspnea,” “Non-traumatic pain,” “Gastrointestinal,” “Gynecological/Obstetric/Urinary,” “Hemorrhages,” “Poisoning/Allergies,” “Psychiatric,” “Trauma,” “Environmental emergencies/External agents,” “Nursing needs,” and “Other unclassified.” The second moment is the clinical assessment by the professional who goes to the scene of the event to assist the user and is based on the International Classification of Diseases 9th Edition (ICD-9) (WHO, 1979).

### Study design

This is a descriptive, cross-sectional study of requests related to suicidal behavior registered in the ECC database of the province of Málaga, received during 2013 and 2014.

### Sample

The database analyzed comprised a total of 589,013 requests. To improve data quality, 113,180 requests were excluded since they were not health care requests, together with 69,575 claims that were not classified in the main categories. Furthermore, 16,452 duplicate requests were identified and elim-

inated. A total of 389,806 valid health claims were obtained, of which 277,207 were excluded because information on the clinical assessment by the health professional was not recorded in the database. Lastly, the sample consisted of 112,599 valid health requests that had been attended by a health professional at the scene of the event, for which the clinical assessment had been recorded (Figure 1).

Calculation of the sample size to obtain the necessary statistical power to generalize our results was based on the infinite population formula (Morales-Vallejo, 2012). Accordingly, for the sample to be representative in our case, 1,067 requests would be required.

### Request classification

Two moments were considered in the process of classifying the requests. The first was the classification made by the ECC, and the second, the clinical assessment provided by the health professional. We regard the latter as a reference standard since we assume professionals have more information for classifying requests, since they attend patients *in situ*.

According to the ECC classification, requests related to suicidal behavior are classified by the operator as “a tendency to self-harm and suicide,” “suicide threats” and “sui-

cidal ideas,” which are subcategories within the group of “Psychiatric” requests, which include all levels of suicidal behavior (from ideas to attempts).

Considering the clinical assessment by the healthcare professional who attends patients *in situ*, a request is regarded as involving suicidal behavior when it has been classified by the suicide codes (V62.84: *Suicidal Ideas and E950-E959: Suicide and self-inflicted injuries*) and those referring to drug poisoning, according to the selection made in the study by Mejías-Martín et al. (2018). We have also incorporated code 292.2: *Pathological drug poisoning* because this is frequently used in situations of possible suicide (Blanco-Sánchez et al., 2018; Fernández, García, Romero, & Marquina, 2008) and it is the main method used in previous suicide attempts (Pacheco Tabuenca & Robles Sánchez, 2011).

### Statistical analysis

To validate the classification system used in the ECC for suicidal behaviors, sensitivity, specificity, and PPVs and NPVs were calculated, using clinical assessment as the reference standard.

Sensitivity is the probability that the system will correctly classify an individual who meets a certain criterion, according to the reference standard. Specificity refers to the ability of the system to detect cases that do not meet a certain condition according to the reference standard. Both are therefore intrinsic properties of the classification system and provide information on the probability of obtaining a result (whether positive or negative) based on the true state of the subject, which, in our case, is suicidal behavior classified according to clinical assessment, which makes it possible to assess the validity of the system. Both properties yield values ranging from 0-100%, with a higher percentage indicating greater sensitivity or specificity.

Predictive values show the certainty with which the ECC classification system will predict the presence or absence of a certain condition (Pita Fernández & Pértegas Díaz, 2003). The PPV refers to the probability of meeting a certain condition (a request related to suicidal behavior, according to our reference standard) if the ECC classification has categorized the request as involving suicidal behavior. NPV refers to the probability of failing to meet a certain condition (not a request related to suicidal behavior, according to our reference standard), and being classified by the ECC as non-suicidal behavior.

### Ethical considerations

The study met the ethical research criteria and was approved by the Ethics and Research Committee of Northeast Málaga. The databases analyzed did not contain identifiable information on the patients (such as the National Identity

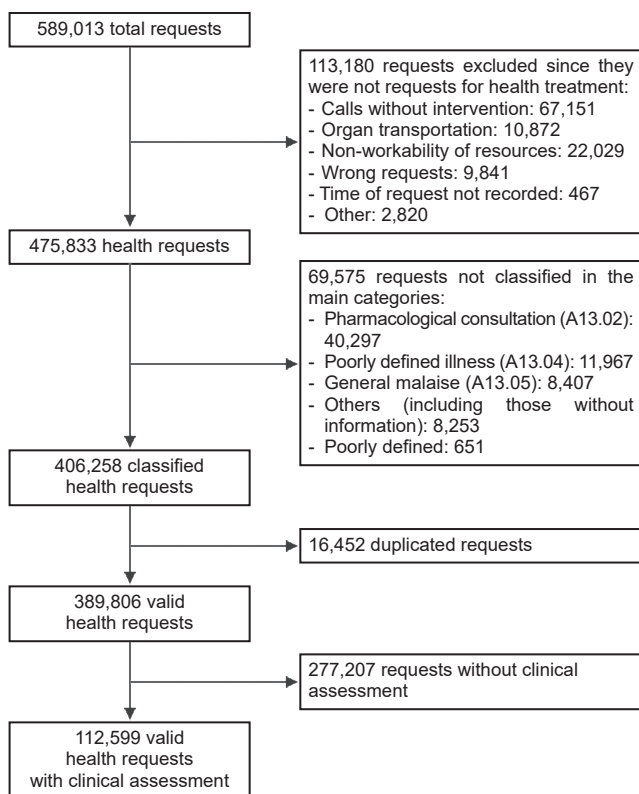


Figure 1. Flow chart of the selection process of the study sample 2013-2014.

Document and Health Card Number). In addition, all members of the research team signed a specific confidentiality commitment.

## RESULTS

Of the 112,599 valid health service requests, the mean age was 66.27 ( $SD = 21.18$ ) while 52.4% ( $n = 58,976$ ) of the re-

Table 1

*Distribution of requests regarded as involving suicidal behavior according to the codes in the International Classification of Disease Ninth Revision, assigned by the health professional attending the person who requested the services.  $n = 1,456$*

Code	Description	n (%)
292.2	Pathological drug poisoning	83 (5.7)
305.4	Abuse of sedative, hypnotics, or anxiolytics, without dependence	193 (13.3)
305.8	Abuse of antidepressants, without dependence	15 (1)
300.9	Unspecified, non-psychotic mental disorder. Suicide attempt	591 (40.6)
<b>969</b>	<b>Poisoning by psychotropic agents</b>	<b>4 (.3)</b>
969.0	Antidepressants	23 (1.6)
969.1	Tranquillizers based on phenothiazine	0 (0)
969.2	Tranquillizers based on butyrophenones	2 (.1)
969.3	Other major antipsychotics, neuroleptics, and tranquillizers	1 (.07)
969.4	Tranquillizers based on benzodiazepine	352 (24.2)
969.5	Other tranquillizers	0 (0)
969.6	Psychodysleptics (hallucinogens)	1 (.07)
969.8	Other specified psychotropic agents	0 (0)
969.9	Unspecified psychotropic agent	1 (.07)
<b>E950-E959</b>	<b>Suicide and self-inflicted injuries</b>	
E950	Suicide and self-inflicted poisoning with solid or liquid substances	13 (.9)
E951	Suicide and self-inflicted poisoning with household gas	1 (.07)
E952	Suicide and self-inflicted poisoning from other gases and vapors.	1 (.07)
E953	Suicide and self-inflicted injuries due to hanging, strangling or asphyxia	11 (.8)
E954	Suicide and self-inflicted injuries due to submersion (drowning)	1 (.07)
E955	Suicide and self-inflicted injuries due to firearms, air guns, and explosives	1 (.07)
E956	Suicide and self-inflicted injuries due to sharp instrument	3 (.2)
E957	Suicide and self-inflicted injuries due to jumping from a height	3 (.2)
E958	Suicide and self-inflicted injuries by other means and unspecified means.	118 (8.1)
E959	Delayed effects of self-inflicted injury	0 (0)
<b>E980-E989</b>	<b>Injury regardless of whether it was accidental or intentional</b>	
E980	Poisoning by solid or liquid substances, regardless of whether it was accidental or intentional	7 (.5)
E981	Poisoning by domestic gas, regardless of whether it was accidental or intentional	0 (0)
E982	Poisoning by other gases, regardless of whether it was accidental or intentional.	0 (0)
E983	Hanging, strangling or asphyxia, regardless of whether it was accidental or intentional.	5 (.3)
E984	Submersion (drowning) regardless of whether it was accidental or intentional.	4 (.3)
E985	Injury by firearms or explosives, regardless of whether it was accidental or intentional.	0 (0)
E986	Injury by cutting or sharp instrument regardless of whether this was accidental or intentional.	0 (0)
E987	Falling from a height, regardless of whether it was accidental or intentional.	0 (0)
E988	Injury by other means or unspecified means, regardless of whether it was accidental or intentional.	0 (0)
E989	Delayed effects of injury, regardless of whether it was accidental or intentional.	0 (0)
<b>V.62.84</b>	<b>Suicidal ideation</b>	<b>22 (1.5)</b>
<b>Total</b>		<b>1,456 (100)</b>

**Table 2**  
*Number of cases and percentages of TP, TN, FP, and FN, between clinical assessment and the ECC classification of requests involving suicidal behavior n = 112,599*

Suicidal behaviors	Clinical assessment		
	Yes N (%)	No N (%)	Total N (%)
ECC classification <sup>a</sup>			
Yes (%)	652 (.6) <sup>b</sup>	738 (.7) <sup>c</sup>	1,390 (1.2)
No (%)	804 (07) <sup>d</sup>	110,405 (98.1) <sup>e</sup>	111,209 (98.8)
Total (%)	1,456 (103)	111,143 (98.7)	112,599 (100)

<sup>a</sup> ECC: Emergency Coordinating Center; <sup>b</sup> True Positives (TP); <sup>c</sup> False Positives (FP); <sup>d</sup> False Negatives (FN); <sup>e</sup> True Negatives (TN).

quests were made by women. The total number of requests were divided into two groups: that of the ECC, when the patient is attended by telephone and that of the healthcare professional who attends *in situ*. The first group classified 1,390 requests (1.2%) as suicidal behavior; while the second classified 1,456 (1.3% as this type of behavior).

Table 1 shows the distribution of requests related to suicidal behavior according to the clinical assessment of the health professional who attends the patient at the scene of the event. The codes referring to mental disorders and poisoning are the most common diagnoses (40.6% and 24.2%, respectively), as opposed to the actual suicide codes, which account for 12% of the distribution.

Table 2 shows the results of the calculation of sensitivity, specificity, PPV, and NPV. The sensitivity of the classification system of the coordinating center to correctly identify requests related to suicidal behaviors, according to the reference pattern, was 44.78%, while the specificity of the classification system to detect the absence of suicidal behavior, according to the clinical assessment, was 99.34%. As for the PPV of requests related to suicidal behavior, a value of 46.91% was obtained and a value of 99.28% was obtained for the NPV (Table 3).

As can be seen from Table 2, 738 requests (.7% of the total) were regarded as false positives. In other words, the ECC classified them as suicide, but the healthcare professional who attended the user reported a different diagnosis. Eight hundred and four cases were considered false negatives (.7% of the total). These are requests that the coordi-

nating center did not classify as suicide, whereas the health professional assigned them codes which meant they could be considered as suicidal behavior.

## DISCUSSION AND CONCLUSION

The purpose of this study is to validate the classification system of a coordinating center for urgent requests in comparison with the categorization made by doctors attending these requests *in situ*. The results obtained indicate that the ECC classification has a lower capacity to identify requests involving suicidal behavior than it has to detect the absence of suicidal behavior in the requests received. The strengths of this study include having a large set of data obtained from daily clinical practice and being able to compare the classification of requests at two different moments in the OES care process.

The results of the analysis of the sensitivity and specificity of the classification system used by the ECC have shown that it experiences difficulty in detecting demands for suicidal behavior. In this regard, [Mejías-Martín et al. \(2018\)](#) in their study on OES requests involving suicidal behavior have highlighted the lack of agreement between the demands classified by the ECC operator as suicide and the clinical assessment made by the healthcare team attending the patient. Their result showed that, out of the total number of requests identified as suicide by the operator, only 7.7% are confirmed as such by the doctor treating the pa-

**Table 3**  
*Sensitivity, specificity, positive predictive value and negative predictive value of emergency coordinating service classification, n = 112.599*

Type of request	Sensitivity (%) (CI 95%)	Specificity (%) (CI 95%)	PPV <sup>a</sup> (%) (CI 95%)	NPV <sup>b</sup> (%) (CI 95%)
Suicidal behaviors	44.78 (42.21 – 47.38)	99.34 (99.29 – 99.38)	46.91 (44.26 – 49.57)	99.28 (99.23 – 99.33)

<sup>a</sup> PPV: Positive predictive value; <sup>b</sup> NPV: Negative predictive value; <sup>c</sup> CI: Confidence interval.



tient. These findings can be explained by factors such as the lack of a specific protocol in the case of suicidal behavior to guide action (Mejías-Martín et al., 2018), the absence of a uniform classification system to categorize suicidal behavior (Silverman, Pirkis, Pearson, & Sherrill, 2014), and the difficulty in determining, for the professional who answers the phone, the intentionality of a suicide attempt when the circumstances are unclear or the patient cannot or does not wish to clarify matters (Blanco-Sánchez et al., 2018; Mejías-Martín, García-Caro, Schmidt, Quero, & Gorlat, 2011; Mejías-Martín et al., 2018). These factors, together with the great social stigma attached to suicide, suggest that they may be interfering in the accurate classification of requests as involving suicidal behavior.

As for the lack of agreement in the classification of requests between the operator and the doctor attending the patient *in situ*, we found, on the one hand, that requests regarded as false positives were mainly classified as a mental illness, according to our standard of reference. The presence of mental disorders is a risk factor, but it is hardly sufficient factor (Franklin et al., 2017) for suicidal behavior, and the causality of suicides due to a mental disorder has been widely disseminated (García-Haro et al., 2020), it seems logical to think that an ECC operator would classify a request as involving suicidal behavior when the patient verbalizes a related ideation or behavior. However, it is the onsite physician who can explore and undertake a more thorough evaluation of the patient's condition and definitively considering the demand as a mental health problem.

Furthermore, requests considered false negatives were mostly classified as poisonings/allergies by the ECC. It is to be expected, given the information provided by the person requesting emergency health services that the operator will not have sufficient evidence to be able to consider the request as one involving suicidal behavior. Moreover, among the false negatives, requests classified by the ECC as trauma were found, which include falls and stab/fire wounds. This group of patients can be considered the most worrying as regards their treatment. Because ECCs classify them by severity, an inaccurate classification could lead to a delay in care-delivery.

In their qualitative study, Blanco-Sánchez et al. (2018) found that professionals who attend requests for emergency health services believe that there are no specific protocols for cases of suicide attempts. Requests concerning drug intake, for example, would be dealt with from a medical point of view regardless of whether it involves suicidal behavior. In this same study, since no objective elements were found to identify these behaviors as cries for attention or actual suicide attempts, the criteria of family members were often used to classify them as one or the other. In addition, ECC professionals consider that the health professionals who attend the patient should be responsible for classifying the

request rather than them. Likewise, healthcare professionals consider that suicide attempts should be assessed in hospital services rather than the ECC. In this regard, the study by Moreno-Küstner and González Sánchez (2020) points to the underreporting of cases of suicide deaths in the Death Certificates with Judicial Intervention that provide information for the INE suicide statistics. Their results indicate that 73% of the cases of death were confirmed by family members as the suicide of the deceased person but were not identified as such in the Statistical Bulletin of Deaths with Judicial Intervention. This shows that the classification of suicidal behavior is an arduous, complicated task, and that proper registration by the various official bodies is required to obtain accurate suicide figures.

However, our study is not without limitations and its results should therefore be interpreted with caution. First, some requests were unable to be analyzed due to incomplete records. This underlines the fact that when working with the information extracted from daily clinical practice, intrinsic errors may appear during the data collection stage. Second, it was not possible to take patient variables (such as personal history and previous attempts) into account to be able to accurately classify an episode or call as a suicide attempt. Likewise, aspects such as gender and age could be potential sources of bias since the sample analyzed has a higher representation of older people and women, the groups that most request OES. Finally, in the future, we could encounter changes in the classifications used to date to record suicidal behavior. However, we consider that this limitation is always present since the methods and instruments used in research undergo changes and modifications to enhance their use.

This study has significant practical implications, such as, for example, serving to orient the training of OES professionals in the importance of conducting a more exhaustive classification of requests in general and those involving suicidal behavior in particular. In addition, better classification will allow for more effective, efficient interventions in suicide cases while at the same time facilitating the identification of cases regarded as false negatives, thereby reducing the unnecessary use of health resources.

In conclusion, we consider that it is necessary to have a valid classification system to identify requests involving suicidal behavior for pre-hospital emergency services, and to conduct periodic studies on the validity of this classification to improve care delivery. The use of categories or questions that are valid for identifying requests involving suicidal behavior will allow for better detection of this problem and help develop more suitable suicide prevention plans for this at-risk population.

## Funding

Consejería de Salud, Junta de Andalucía. Código: AP-0226-2019. Ayuda del Plan Propio de la Universidad de Málaga para Proyecto

Puente “Diseño e implementación de un Registro de la Conducta Suicida en Málaga. Aplicando Técnicas de inteligencia artificial para la predicción y prevención del suicidio”.

### Conflict of interest

The authors declare that the research was conducted in the absence of any commercial or financial relationship that could be construed as a conflict of interest.

### Acknowledgments

Thanks are due to the Clinical Management Unit of the Primary Care Emergency Service (SUAP) of the Málaga-Guadalhorce Health District and to Cristobalina Guillén Benítez of the Málaga Emergency Coordination Center.

We would also like to thank Gonzalo Ramos, a doctor in computer engineering and professor in the Department of Computer Languages and Science at the University of Málaga, for his advice and support in this research.

### REFERENCES

Blanco-Sánchez, I., Barrera-Escudero, M., Martínez-Martínez, S., Mejías-Martín, Y., Morales-García, J. A., & García-Caro, M. P. (2018). Experiencia de los profesionales en la determinación de la situación de intento de suicidio en urgencias extrahospitalarias. *Revista Presencia*, 14, e11658. Retrieved from <http://ciberindex.com/c/p/e11658>

Feldman, M. J., Verbeek, P. R., Lyons, D. G., Chad, S. J., Craig, A. M., & Schwartz, B. (2006). Comparison of the Medical Priority Dispatch System to an Out-of-hospital Patient Acuity Score. *Academic Emergency Medicine*, 13(9), 954-960. doi: 10.1197/j.aem.2006.04.018

Fernández, C., García, G., Romero, R., & Marquina, A. J. (2008). Intoxicaciones agudas en las urgencias extrahospitalarias. *Emergencias: Revista de la Sociedad Española de Medicina de Urgencias y Emergencias*, 20(5), 328-331.

Franklin, J. C., Ribeiro, J. D., Fox, K. R., Bentley, K. H., Kleiman, E. M., Huang, X., ... Nock, M. K. (2017). Risk factors for suicidal thoughts and behaviors: A meta-analysis of 50 years of research. *Psychological Bulletin*, 143(2), 187-232. doi: 10.1037/bul0000084

García-Haro, J., García-Pascual, H., González, M., Barrio-Martínez, S., & García-Pascual, R. (2020). Suicidiodiastornamental: Unacnecesaria. *Papeles del Psicólogo*, 41(1), 35-42. doi: 10.23923/pap.psicol2020.2919

Grosgrin, O., Gayet-Ageron, A., Suppan, L., Simon, J., Villar, A., Trombert, V., ... Rutschmann, O. T. (2019). Reliability and performance of the Swiss Emergency Triage Scale used by paramedics. *European Journal of Emergency Medicine*, 26(3), 188-193. doi: 10.1097/MEJ.0000000000000530

Gräff, I., Goldschmidt, B., Glien, P., Bogdanow, M., Fimmers, R., Hoeft, A., ... Grigutsch, D. (2014). The German Version of the Manchester Triage System and its quality criteria –first assessment of validity and reliability. *PLoS One*, 9(2), e88995. doi: 10.1371/journal.pone.0088995

Guzmán-Parra, J., Martínez-García, A. I., Guillén-Benítez, C., Castro-Zamudio, S., Jiménez-Hernández, M., & Moreno-Küstner, B. (2016). Factores asociados a las demandas psiquiátricas a los servicios de urgencias prehospitalarios de Málaga (España). *Salud Mental*, 39(6), 287-294. doi: 10.17711/SM.0185-3325.2016.033

Instituto Nacional de Estadística [INE]. (2019). *Estadísticas de Defunción según la Causa de Muerte 2018* [Fichero de datos]. Retrieved from <https://www.ine.es/jaxi/Datos.htm?path=/t15/p417/a2018/10/&file=02002.px#!:tabs-tabla>

Jiménez-Hernández, M., Castro-Zamudio, S., Guzmán-Parra, J., Martínez-García, A. I., Guillén-Benítez, C., & Moreno-Küstner, B. (2017). Las demandas por conducta suicida a los servicios de urgencias prehospitalarios de Málaga. *Anales del Sistema Sanitario de Navarra*, 40(3), 379-389. doi: 10.23938/ASSN.0047

Mejías-Martín, Y., García-Caro, M. P., Schmidt, J., Quero, A., & Gorlat, B. (2011). Estudio preliminar de las características del intento de suicidio en la provincia

de Granada. *Anales del Sistema Sanitario de Navarra*, 34(3), 431-441. doi: 10.4321/S1137-66272011000300009

Mejías-Martín, Y., Luna, J. D., Rodríguez-Mejías, C., Martí-García, C., Valencia-Quintero, J. P., & García-Caro, M. P. (2019). Factors Associated with Suicide Attempts and Suicides in the General Population of Andalusia (Spain). *International Journal of Environmental Research and Public Health*, 16(22), 4496. doi: 10.3390/ijerph16224496

Mejías-Martín, Y., Martí-García, C., Rodríguez-Mejías, C., Valencia-Quintero, J. P., García-Caro, M. P., & Luna, J. D. (2018). Suicide attempts in Spain according to prehospital healthcare emergency records. *PLoS One*, 13(4), e0195370. doi: 10.1371/journal.pone.0195370

Miret, M., Nuevo, R., Morant, C., Sainz-Cortón, E., Jiménez-Arriero, M. Á., López-Ibor, J. J., ... Ayuso-Mateos, J. L. (2010). Calidad de los informes médicos sobre personas que han intentado suicidarse. *Revista de Psiquiatría y Salud Mental*, 3(1), 13-18. doi: 10.1016/S1888-9891(10)70003-3

Morales-Vallejo, P. (2012). Tamaño necesario de la muestra: ¿Cuántos sujetos necesitamos? En *Estadística Aplicada a las Ciencias Sociales*. Retrieved from <https://web.upcomillas.es/personal/peter/investigacion/Tama%flomuestra.pdf>

Moreno-Küstner, B., & González Sánchez, F. (2020). Subregistro de los suicidios en el Boletín Estadístico de Defunción Judicial en Málaga. *Gaceta Sanitaria*, 34(6), 624-626. doi: 10.1016/j.gaceta.2019.09.003

Moreno-Küstner, B., del Campo-Ávila, J., Ruiz-Ibáñez, A., Martínez-García, A. I., Castro-Zamudio, S., Ramos-Jiménez, G., & Guzmán-Parra, J. (2019). Epidemiology of Suicidal Behavior in Malaga (Spain): An Approach from the Prehospital Emergency Service. *Frontiers in Psychiatry*, 10, 111. doi: 10.3389/fpsy.2019.00111

Organización Mundial de la Salud [OMS]. (1979). *Clasificación Internacional de Enfermedades, Novena Revisión*. Ginebra: OMS.

Organización Mundial de la Salud [OMS]. (2014). *Prevención del suicidio: un imperativo global*. Retrieved from <https://www.who.int/publications/i/item/9789241564779>

Organización Mundial de la Salud [OMS]. (2019). *Suicidio*. Retrieved from <https://www.who.int/es/news-room/fact-sheets/detail/suicide>

Pacheco Tabuena, T., & Robles Sánchez, J. I. (2011). Emergencias extrahospitalarias: el paciente suicida. *Sanidad Militar*, 67(4), 345-353. doi: 10.4321/S1887-85712011000500003

Parenti, N., Bacchi Reggiani, M. L., Iannone, P., Percudani, D., & Dowding, D. (2014). A systematic review on the validity and reliability of an emergency department triage scale, the Manchester Triage System. *International Journal of Nursing Studies*, 51(7), 1062-1069. doi: 10.1016/j.ijnurstu.2014.01.013

Parra-Urbe, I., Blasco-Fontecilla, H., García-Parés, G., Martínez-Naval, L., Valero-Coppin, O., Cebrià-Meca, A., ... Palao-Vidal, D. (2017). Risk of re-attempts and suicide death after a suicide attempt: A survival analysis. *BMC Psychiatry*, 17(1), 163. doi: 10.1186/s12888-017-1317-z

Pita Fernández, S., & Pértegas Díaz, S. (2003). Pruebas diagnósticas: Sensibilidad y especificidad. *Cadernos de Atención Primaria*, 10, 120-124.

Servicio Andaluz de Salud. (2018). *Protocolos de coordinación de la asistencia extrahospitalaria urgente y emergente del sistema sanitario público de Andalucía*. Retrieved from <https://www.sspa.juntadeandalucia.es/servicioandaluzdesalud/publicaciones/protocolos-de-coordinacion-de-la-asistencia-extrahospitalaria-urgente-y-emergente-del-sistema>

Shah, M. N., Karuza, J., Rueckmann, E., Swanson, P., Conwell, Y., & Katz, P. (2009). Reliability and validity of prehospital case finding for depression and cognitive impairment. *Journal of the American Geriatrics Society*, 57(4), 697-702. doi: 10.1111/j.1532-5415.2009.02185.x

Silverman, M. M., Pirkis, J. E., Pearson, J. L., & Sherrill, J. T. (2014). Reflections on expert recommendations for U.S. research priorities in suicide prevention. *American Journal of Preventive Medicine*, 47(3), S97-101. doi: 10.1016/j.amepre.2014.05.025

Williamson, K., Gochman, R., Bullaro, F., Kaufman, B., & Krief, W. (2018). Acuity Prediction Using Emergency Medical Services Prenotifications in a Pediatric Emergency Department. *Pediatric Emergency Care*, 34(4), 253-257. doi: 10.1097/PEC.0000000000001015